

WAAS CH 61002 W28A	APP CRS 276°	Rwy Ldg TDZE Apt Elev	8394 7 65
--	------------------------	-----------------------------	--------------------------------------

RNAV (GPS) Y RWY 28R

FORT LAUDERDALE/HOLLYWOOD INTL (FLL)

RNP APCH - GPS.

⚠

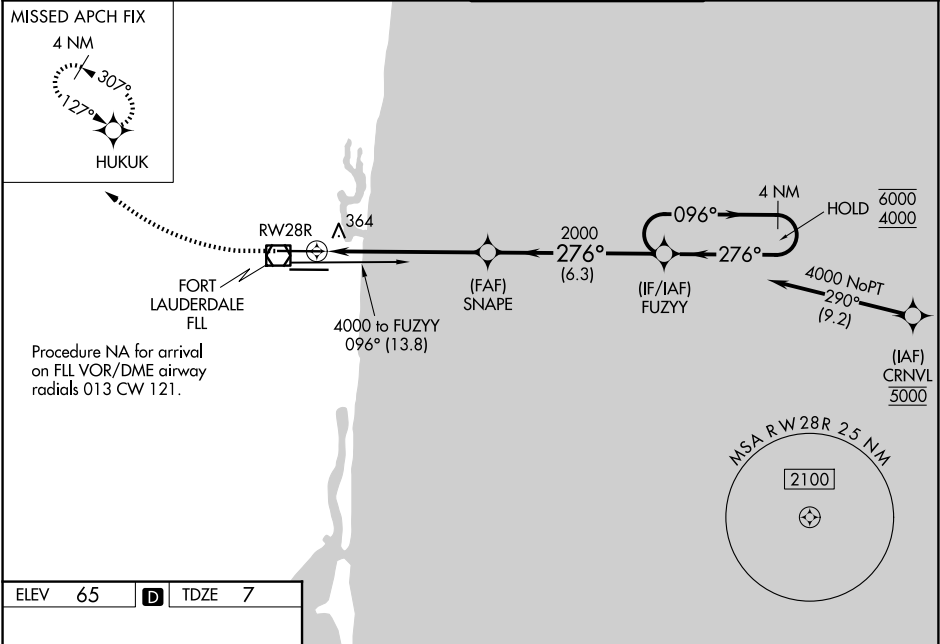
Simultaneous approach authorized. Use of FD or AP required during simultaneous operations. LNAV procedure NA during simultaneous operations. Inop table does not apply to LPV all Cats. For uncompensated Baro-VNAV systems, LNAV/VNAV NA below 7°C or above 54°C. For inop ALS, increase LNAV/VNAV all Cats visibility to 1½ SM and LNAV Cats C/D to 1½ SM.

MALSR

MISSED APPROACH:

Climb to 800 then climbing right turn to 4000 direct HUKUK and hold, continue climb-in-hold to 4000.

D-ATIS 135.0	MIAMI APP CON 133.775 285.6	FORT LAUDERDALE TOWER 119.3 257.8	GND CON 121.4
------------------------	---------------------------------------	---	-------------------------



800

4000

HUKUK

VGSI and RNAV glidepath not coincident (VGSI Angle 3.00/TCH 6°).

10L

9000 X 150

TWR

8000 X 150

UP

DOWN

10R

276°

28R

1.7 NM to RW28R

4.4 NM

6.3 NM

4 NM Holding Pattern

CATEGORY	A	B	C	D
LPV DA	257/40		250 (200-¾)	
LNAV/VNAV DA	581-1¼		574 (600-1¼)	
LNAV MDA	620/24	613 (600-½)	620-1⅓	613 (600-1⅓)
CIRCLING	680-1	615 (700-1)	800-2 735 (800-2)	800-2¼ 735 (800-2¼)

SE-3, 16 APR 2026 to 14 MAY 2026

SE-3, 16 APR 2026 to 14 MAY 2026